

BE-6990-AH Torque Screwdrivers with pre-settable torque values

0,5 – 15 Nm, for  1/4" blades



In professional hands
since 1886.



Operation

Torque Screwdriver BE-6990-IP uses a built-in slip free cam mechanism. Smooth disengagement prevents overtightening. Accurate and easy setting guarantees the accordance with the requirements of DIN/ISO 6789 and EN 26789.

Accuracy $\pm 6\%$ with a lifetime up to at least 20,000 applications.

1/4" hexagon blade holder.



Material

3-component handle made of polyamide, ESD Nitrile Rubber, shore hardness 70 degrees and aluminium alloy with anodised black finish.

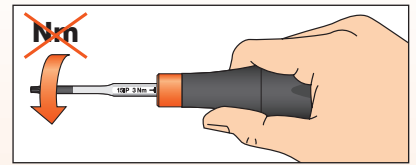
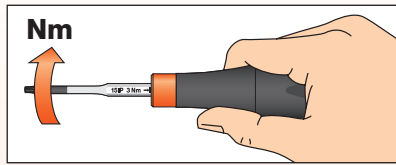


Lockable
sliding T-handle



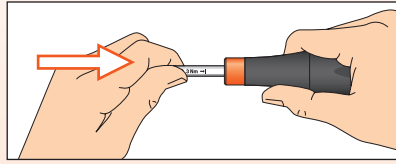
Use

If the screwdriver is turned in the direction of tightening, you hear a click when the correct torque has been reached. When undoing screws, there is no torque limit.



Inserting blades

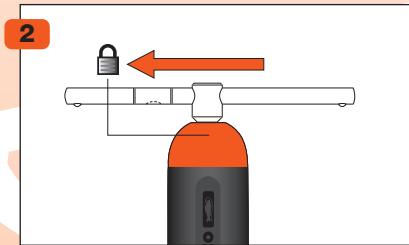
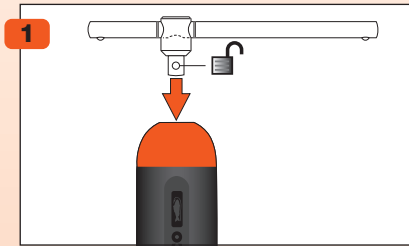
Blades with a 1/4" male hexagon drive can be inserted. Blade profiles such as slotted, PHILLIPS, POZIDRIV and hexagon can be selected.



Application of the sliding T-handle

In order to apply the required torque with less effort, the self-locking T-handle can be inserted into the 1/4" female square at the end of the handle.

When the rod has been pushed through the insert, the screwdriver is secured to the T-handle.

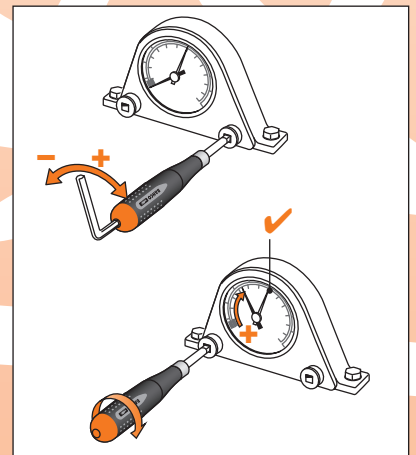
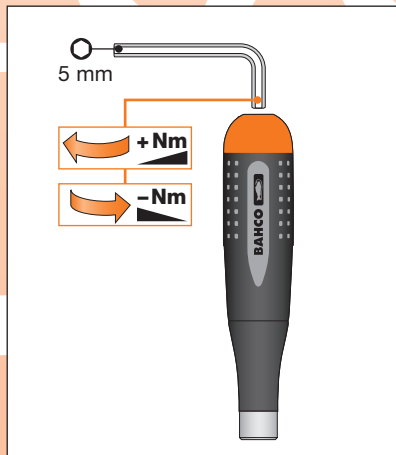


Setting the torque

The torque can be set at the end of the handle using a 5 mm hexagon key. Torque is increased by turning clockwise and decreased by turning anti-clockwise.

Adjustments can be made easily and accurately with the torque calibration rig as illustrated opposite.

Accuracy: ± 6%



Product code	EAN code	Nm							
	731415+						mm		
BE-6990-AH	1848651	0,5 - 15	1/4"	1/4"	5 mm	32 x 150	335	1	

